

ANODIZED ALUMINUM

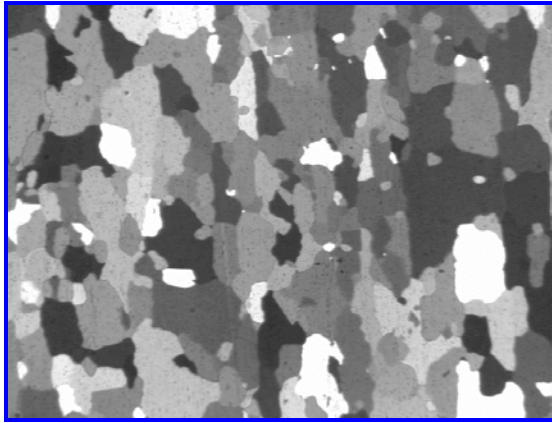


Figure 1: Original image.

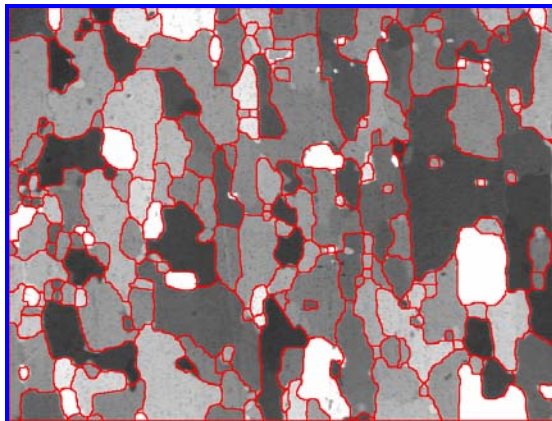


Figure 3: A Gray/Binary Transformation binarized the gray image to outline the grain network (Watershed). Artifacts were removed prior to measurements (Chord Size).

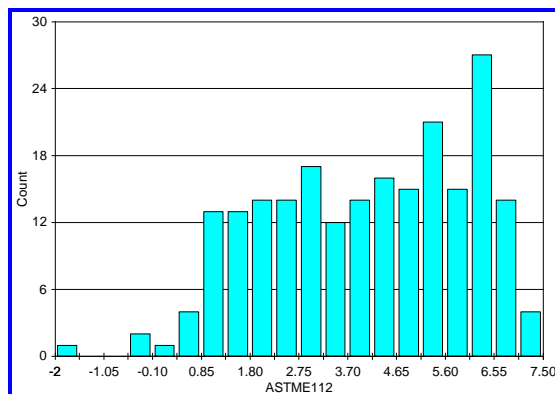


Figure 4: ASTM E 112 distribution.

Sample Description

One sample of anodized aluminum.

Purpose of Analysis

Demonstrate the ability of the image analyzer to discriminate all grains into the field of view and to produce an ASTM E 112 rating.

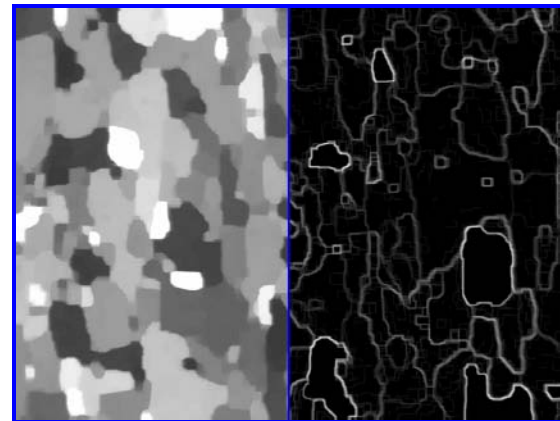


Figure 2: **a)** Gray levels were spread removing internal dots (Gray Closing and Opening). **b)** A Gray Transformation allowed to isolate the grain network (Gray Gradient).

Results Summary

	ASTM E 112
Minimum	-1.72
Maximum	7.26
Rating #	3.38

Apparatus

Image Analysis System: Clemex IMPAK Software
Camera: Sony XC-75 CE
Objective: Nikon 4x