

Area Percentage of Ferrite Image Analysis Report 228

Sample Description

Two pictures to scan.

Purpose of Analysis

Demonstrate the ability of the image analyzer to discriminate and measure the percentage of ferrite phase in the field of view.

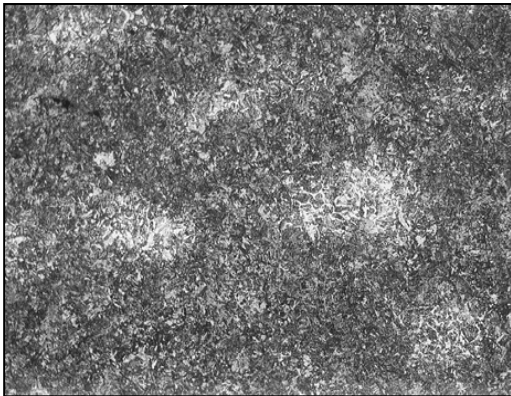


Figure 1: Original Image after the application of a gray filter (Sharpen Low).

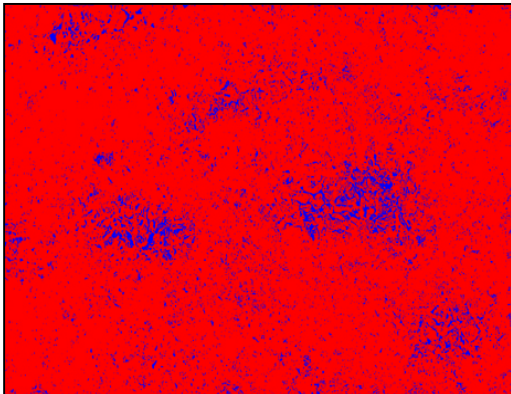


Figure 2: The ferrite was binarized in blue by Gray Thresholding. The second phase was deduced from the ferrite using an Invert binary instruction.

Results Summary

	Area (%)	
	Picture #1	Picture #2
Ferrite	7.52	7.67
Dark Phase	92.48	92.33

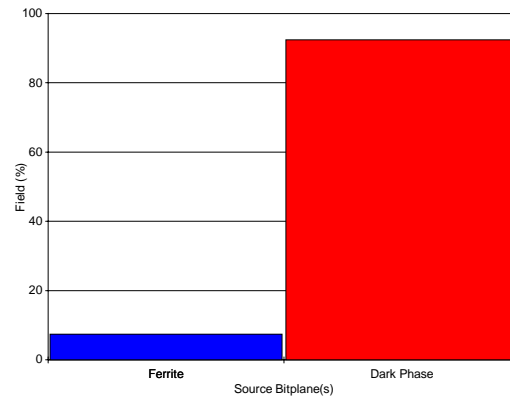


Figure 3: Area percentage of ferrite and dark phase compared to the field of view.

Equipment

Image Analysis

System: Clemex Vision PE
Scanner : Epson ES-800C