

Type VII Graphite Evaluation as per ASTM A247 - (V3)

Date: 2007 05 04	User: Myriam Savard
Units: microns	Sample ID: Cinzento

STEP 1 - Graphite Size Class

Magnification: 100X
Fields: 589
Calibration: 0.6591 $\mu\text{m}/\text{pixel}$
Graphite %: 10.98
Density (1/mm): 170
Analyzed Area (mic2): 299133459

Range in mic.	Class	Count	% (area)
> 1280	>	0	0
640 - 1280	1	1	0.04
320 - 640	2	162	3.87
160 - 320	3	2603	27.04
80 - 160	4	8769	39.21
40 - 80	5	12087	21.24
20 - 40	6	9675	6.25
10 - 20	7	7310	1.65
0 - 10	8	10147	0.71

Mean **Maximum**
Length (μm): 53.65 698.76
Equivalent Size Class: 5 1
Count: 50754

Graphite Size Class

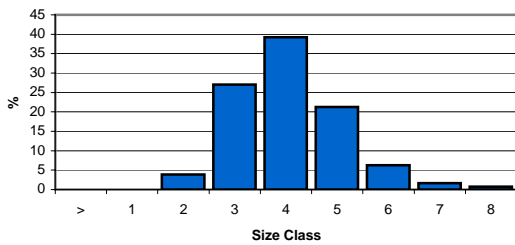


Figure 1: Typical field for graphite size class evaluation.

STEP 2 - Graphite Type (Distribution)

Magnification: 25X
Fields: 9
Calibration: 2.6619 $\mu\text{m}/\text{pixel}$
Graphine Form Type: VII (fixed value)
Analyzed Area (mic2): 91439332

Types	Field %
A	0.00
B	0.00
C	0.00
D & E	100.00

Comment:

Mainly E type.

Graphite Distribution (manual)

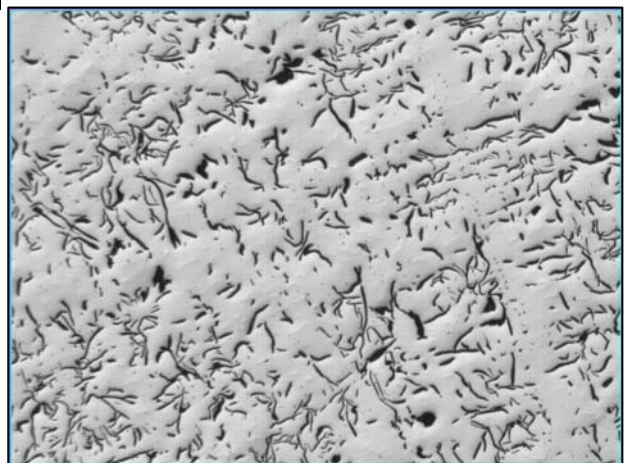
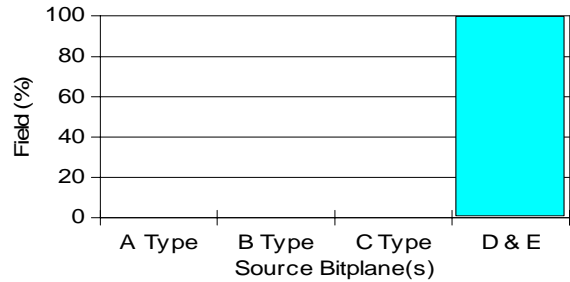


Figure 2: Typical field for distribution type evaluation.