

Type I Graphite Evaluation as per ISO 945 - (V3)

Date: 2007 05 04	User: Myriam Savard
Units: microns	Sample ID: Cinzento

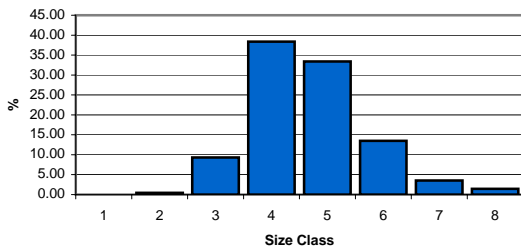
STEP 1 - Graphite Size Class

Magnification: 100X
Fields: 589
Calibration: 0.6591 $\mu\text{m}/\text{pixel}$
Graphite %: 10.98
Density (1/mm): 170
Analyzed Area (mic2): 299133459

Range in mic.	Class	Count	% (area)
> 1000	1	0	0.00
500 - 1000	2	9	0.43
250 - 500	3	529	9.29
120 - 250	4	5066	38.36
60 - 120	5	10930	33.41
30 - 60	6	11454	13.50
15 - 30	7	8347	3.55
0 - 15	8	14419	1.46

	Mean	Maximum
Length (μm):	53.65	698.76
Equivalent Size Class:	6	2
Count:	50754	

Graphite Size Class



STEP 2 - Graphite Type (Distribution)

Magnification: 25X
Fields: 9
Calibration: 2.6619 $\mu\text{m}/\text{pixel}$
Graphine Form Type: I (fixed value)
Analyzed Area (mic2): 91439332

Types	Field %
A	0.00
B	0.00
C	0.00
D & E	100.00

Comment:

Mainly E type.

Graphite Distribution (manual)

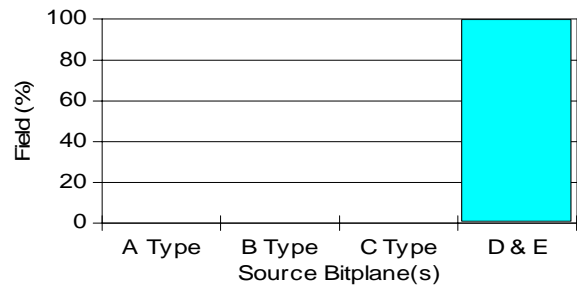


Figure 1: Typical field for graphite size class evaluation.

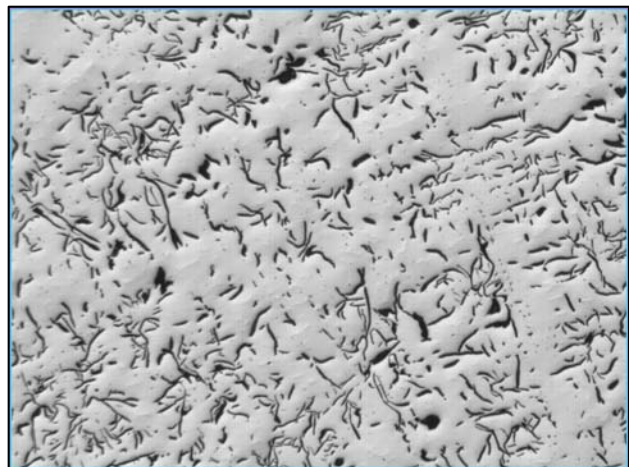


Figure 2: Typical field for distribution type evaluation.